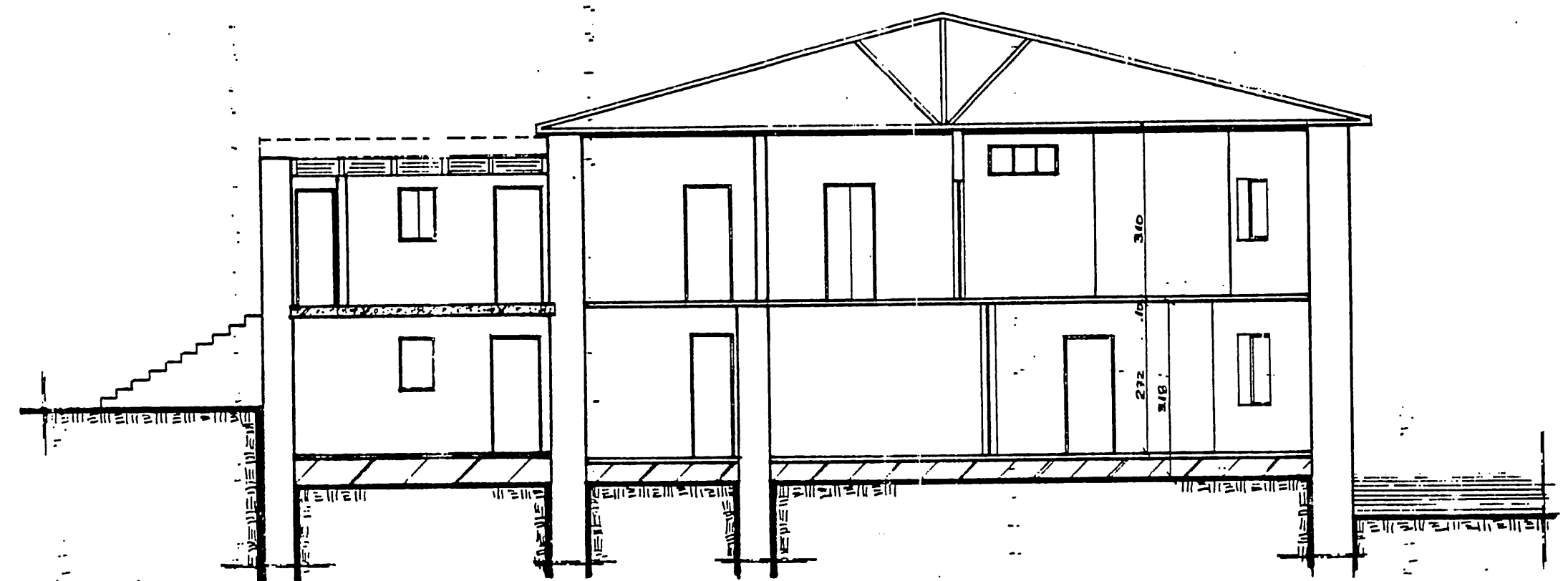
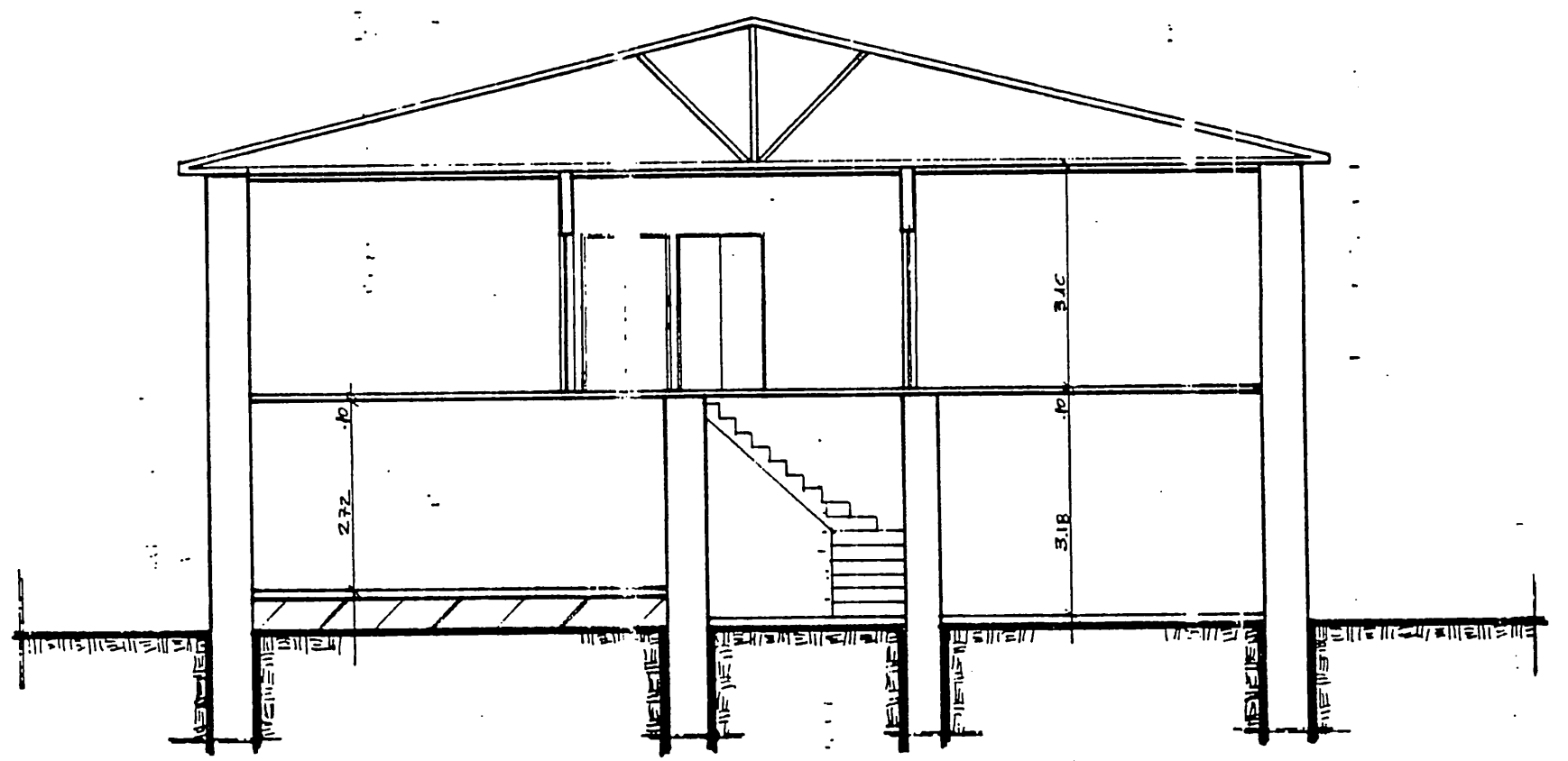


1.10
1.00
0.90
0.80
0.70



TOMH B-B

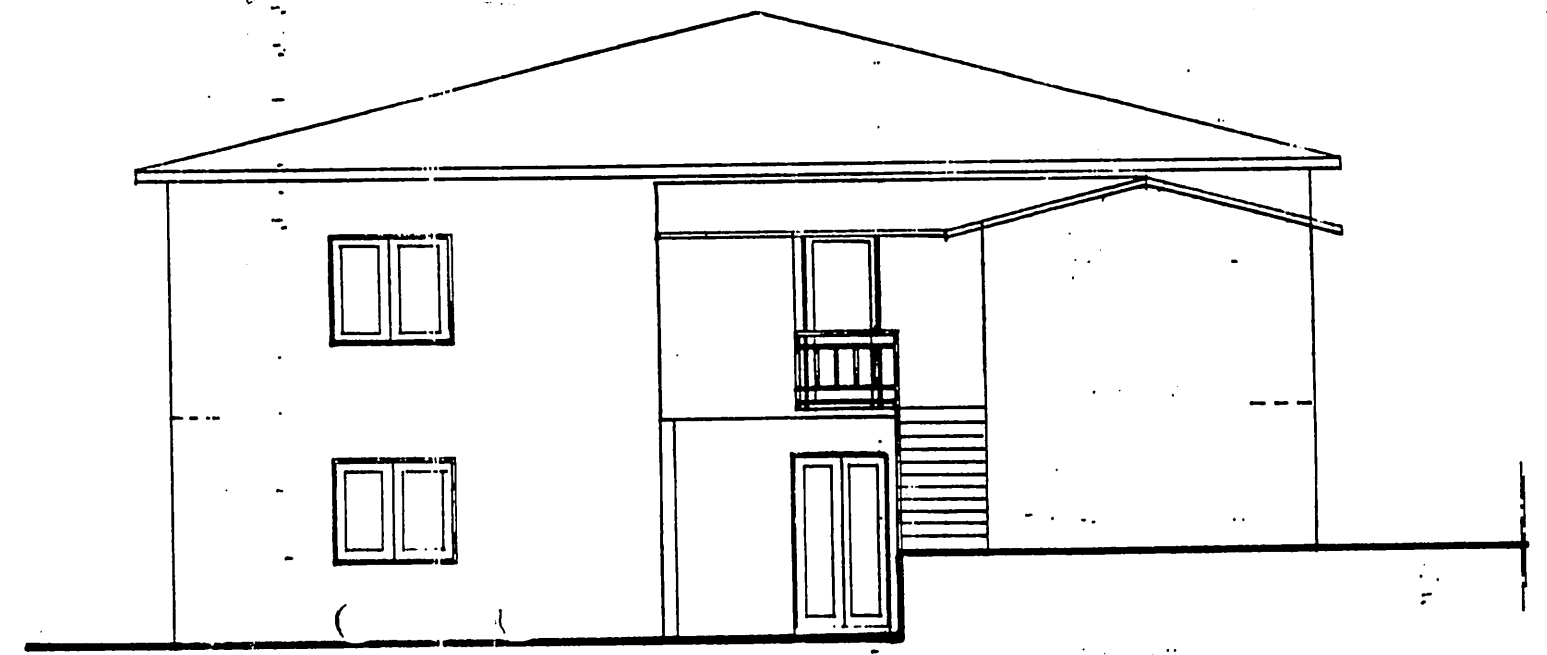
0.60
0.50
0.40
0.30
0.20



TOMH A-A

1.865
1.80
1.745
1.68
1.625
1.565
1.505
1.445

1.928
1.828
1.728
1.628



ΔΥΤΙΚΗ ΟΨΗ



ΑΝΑΤΟΛΙΚΗ ΟΨΗ

1.11
1.015
0.915
0.815
0.715
0.615
0.515
0.415
0.315
0.215
0.115